

Artec Ray II



Official Artec 3D
Gold Status Reseller

Lightning-fast long-range 3D scanner
for professional captures with high accuracy

6/2404 Logan Road, Eight Mile Plains
Brisbane, QLD 4113, AUSTRALIA
info@3dsl.com.au | www.3dsl.com.au
+61 1300 733758



Digital twins



Reverse engineering



Inspection



Civil infrastructure



Forensics



Heritage preservation

With the high-accuracy, long-range, and wireless Ray II, you can precisely capture large to massive objects, scenes or areas faster than ever, and from up to 130 m away.



Speed

Capture a full dome at highest resolution in 1.7 mins.



Accuracy

Expect data with an uncompromised 3D point accuracy of 1.9 mm from 10 meters.



Resolution

No details missed at a resolution of 3 mm at 10 meters.

Metrology-grade precision

Artec Ray II scans with high 3D point accuracy and best-in-class angular accuracy.

3D point accuracy	@10m	1.9 mm
	@20m	2.9 mm
	@40m	5.3 mm
Angular accuracy	0.87 mm @10m (or 18")	
Range accuracy	1.0 mm + 10 ppm	
Range noise	0.4 mm @ 10m — 0.5mm @ 20m	



Check & Adjust

If your device isn't perfectly calibrated, your scanner will either automatically calibrate itself by scanning the surroundings, or let you know if further action is required.



Accuracy certificates

Scan with full confidence knowing that your scanner has been verified to fall within specifications.



Declaration of conformity

Your scanner has been rigorously tested and is guaranteed to conform to the required list of 11 European safety standards.

Fast & easy

Artec Ray II captures data at a remarkable 2 million pts/s.

resolution	3 mm	6 mm	12 mm
without texture	1.7 min	0.85 min	0.4 min
with texture	2.7 min	1.9 min	1.4 min

Onboard control

Fuss-free scanning is ensured with the intuitive Ray II — with basic features accessible on board, it's as simple as pressing a button, with no computer or other device needed.



Portable and quick to set up

At just 5 kg including the tripod, Ray II needs no targets and is ready for full setup in mere seconds.



Perfect match for Leo

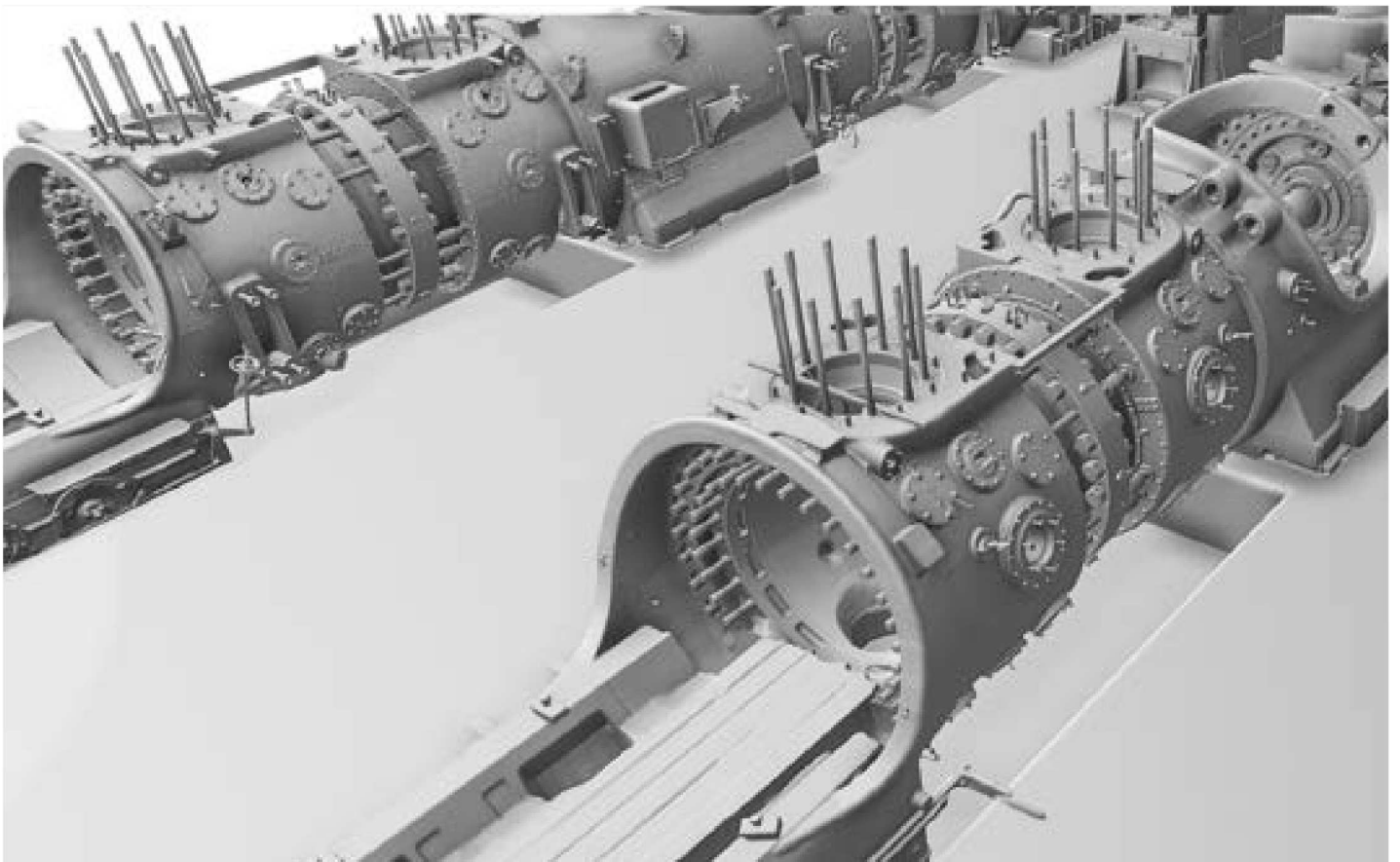
Exceptionally well-suited for use with the wireless powerhouse Artec Leo, the duo can quickly capture large or even massive objects with high accuracy and full coverage.

Power couple

An unbeatable combination of two smart, wireless scanners: Artec Ray II's range and speed for full scenes and large objects, the handheld Artec Leo for specific areas and angles.

All Artec 3D scanners

The long-range Ray II also integrates with all other Artec 3D scanners in seconds.



Specifications

Accuracy & resolution

3D point accuracy	1.9 mm @ 10 m 2.9 mm @ 20 m 5.3 mm @ 40 m
Angular accuracy	18" (0.87 mm @ 10 m)
Range accuracy	1.0 mm + 10 ppm
Resolution	3 user selectable settings: 3 / 6 / 12 mm @ 10 m
Range noise ^{1 2}	0.4 mm @ 10 m 0.5 mm @ 20 m

Field of view & range

Field of view	360° (horizontal) / 300° (vertical)
Range	0.5 — 130 m

Speed

3D capture rate	Up to 2,000,000 pts/sec
Scanning time without texture @ 10 m	1.7 min @ 3mm resolution 0.85 min @ 6mm resolution 0.4 min @ 12mm resolution
Scanning time with texture @ 10 m	2.7 min @ 3mm resolution 1.9 min @ 6mm resolution 1.4 min @ 12 mm resolution

Color capture

Camera	36 MP 3-camera system captures 432 MPx raw data for calibrated 360° × 300° spherical image
HDR	Automatic, 5 brackets

Operation

On scanner	Touchscreen control with finger touch, full color WVGA graphic display 480 × 800 pixels
Mobile devices	Artec Remote app for iOS and Android tablets and smartphones including: <ul style="list-style-type: none">• Remote control of scan functions• Settings selection• Launch scanning

Algorithms

Real time registration	Automatic point cloud alignment based on real time tracking of scanner movement between setups based on Visual Inertial System (VIS) by video enhanced inertial measurement unit
Automatic removal of moving objects	Delete captured data of moving objects using Double Scan
Check & Adjust	Field procedure for targetless checking of angular parameters



**Official Artec 3D
Gold Status Reseller**

3D Space Labs Pty Ltd

6/2404 Logan Road
Eight Mile Plains
Brisbane, QLD 4113, AUSTRALIA

info@3dsl.com.au
www.3dsl.com.au

+61 1300 733758



**Learn more →
about Artec Ray II**



Luxembourg

4 Rue Lou Hemmer,
L-1748 Senningerberg,
Luxembourg

+352 2 786-1074

USA

2880 Lakeside Drive, #135
Santa Clara, CA 95054

+1 669-248-8601

Montenegro

Petovica Zabio bb.,
Utjeha, 85000 Bar
Municipality

+382 67 146 005

China

Tower A, Zhongyi Building,
580 West Nanjing Road,
Jing'an District, Shanghai

Japan

Gran Biz Shibadaimon F1,
1-2-4, Shibadaimon,
Minato-ku, Tokyo

+81 080 1680 0727